



Blue Grass Beret e-Newsletter

GRANDCHILDREN'S RALLY JULY 19 - 22, 2012

Diamond Lake Campground Owensboro, Kentucky



Dave and Betty Leeper are hosting the Grandchildren's Rally at Diamond Lake Resort located in Owensboro, Kentucky. Diamond Lake is a 157 acre campground with 270 campsites along with several cottages for those who may want to leave the Airstream at home. There are fishing lakes, go kart tracks, a grill with burgers, drinks and of course ice cream. Best of all there is a swimming pool to cool off in.

Make your campground reservations at:
Diamond Lake Campground Resort
7301 Hobbs Road
Owensboro, Ky 42301
Phone: 270-229-4900



Clarence's Comments:

Folks our 2012 Rally season is moving right along. As we move into the warmest part of summer it is time to get together with our children and grandchildren to spend time around the pool, eating ice cream and enjoying the activities we have planned. Looking forward to seeing everyone in Owensboro in July. We are asking each child to bring two (2) cans of non perishable food for the local food pantry.

GRANDCHILDREN'S RALLY ITINERARY

Thursday 19 July

5:30pm Dinner at Mama's Table located in Owensboro. We will have a room where everyone can be seated together and order off the menu. Local reviews say you can get \$10 worth of comfort food for only \$5 at Mama's Table.

Friday 20 July

8:30am Pancake and sausage breakfast the Jones' trailer or the pavilion if available

Check out the activities at Diamond Lake with your Grandma and Grandpa

Lunch on your own

1:00pm We need to be at the Ford Nature Center for a special guided tour. There is no charge but they do accept donations.

5:30pm Moonlite Barbeque (Rest of the evening with your grandchildren.) The Leepers will be hosting a spaghetti dinner for those children that do not want to go to Moonlight Barbeque.

Saturday 21 July

8:30am Cereal and fruit Breakfast at the Jones' trailer or pavilion if available

10:00am Bluegrass Music Museum. Cost is \$5 and both children and adults will like this museum.

11:30am Walk to Bee Bop's Restaurant. 122 2nd St. (2 blocks away)

1:00pm Be at the Museum of Science and History 2nd and Davies St. This is just across the street from the Blue grass Museum We will have a special tour just for our group to take the coal mine tour in the basement of the museum.

5:30pm Evening potluck meal a selection of smoked meat cooked by Dave Leeper, Smores following.

Sunday 22 July

8:00am Coffee, milk and donuts, with a devotional service following breakfast.



Buddy Rally Photo Gallery



Gathering for a ride on the Belle of Louisville



Buffet Lunch on the Belle of Louisville

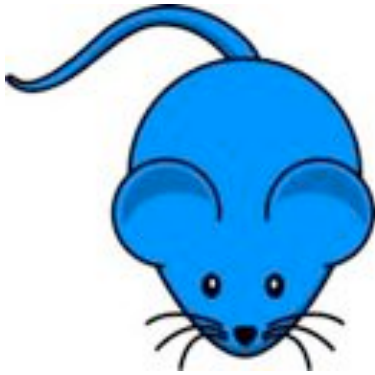


Lunch at Slow Poke Farm



Lunch at Slow Poke Farm





THE BLUEGRASS MOUSE

Went to check on the Ky Unit campout at Grandma's in Shepherdsville. They were few in number but the ones there were having your usual fun and sightseeing the area concluding each night around their campfire even tho it was too hot for my fur coat! While I was there it came to mind that many of you are bothered with FIRE ANTS when camping in different areas. Thought you might be interested in this info that was sent to me. You may want to share it with your friends and family.

KILLING FIRE ANTS

This is a new twist to killing fire ant colonies. For those not familiar with Walter Reeves, he is from the University of Georgia Agriculture Department, specializing in home gardening. His television show, "Gardening in Georgia", is on each Saturday.

I know fire ants are picky eaters and any type poison that is effective takes seven feeding steps before the queen receives it. Plus, if the bait is stored in close proximity to any petroleum or fertilizer products they won't touch it. Contact poisons that are on the market just cause the colony to move away. A well developed colony can be as deep as 30 feet and spread out some 20 to 50 feet from the mound center... This was documented by studies done in the early 60's when they were first sited in South Alabama.

An environmentally friendly cure for fire ants has been announced by Walter Reeves on his Georgia Gardener radio program. Testimonials that it REALLY WORKS are coming in.

Simply pour two cups of CLUB SODA (carbonated water) directly in the center of a fire ant mound. The carbon dioxide in the water is heavier than air and displaces the oxygen which suffocates the queen and the other ants. The whole colony will be dead within about two days.

Besides eliminating the ants, club soda leaves no poisonous residue, does not contaminate the ground water, and does not indiscriminately kill other insects. It is not harmful to your pets, soaks into the ground.

Each mound must be treated individually and a one liter bottle of club soda will kill 2 to 3 mounds. SPREAD THE WORD!!!!





Don Clark Resignation

Just prior to our business meeting at the Derby Reunion Rally in May, International 1st VP (and International President nominee) Don Clark resigned due to acute health problems. Sadly, he has since been diagnosed with cancer. The current International President has announced that the International officer elections will stand as they are, but upon election, all of the elected Vice Presidents will move up one office to fill the vacant President position and a new 3rd Vice President will be elected by the Delegates from nominees from the floor.

Two members have announced their candidacy for the 3rd VP position, namely Region 11 President-Elect Richard Girard and Region 9 President-Elect James Schwerdfeger.

Pet Show

Every year a fun Pet Show is held at the International Rally. This year is no different except. We will be doing a couple of things different. We will still have the categories, Costume, Tricks, Obedience, Best Looking which will be judged by two members from the Sedalia Kennel Club and one member of the Poodle Club of America.



They will be bringing some of their show dogs to display, answer questions about “what to look for in a good used dog”, and in general answer your questions.

The pet show is open to ANY PET, dog, cat, bird, hamster, or snake (just kidding). This event will be held on Sunday, July 1st at 2:00 in the Youth Building Arena.

There will also be a microchip clinic available for dogs only at a cost of \$20.00.

Bulletin Board

This year Karl and Cindy Weisenberger crafted the Kentucky Unit Bulletin Board for the competition at the International Rally. We are hoping to add another winner to the Bulletin Board museum in Russell Springs, Kentucky.



Region 5 Lunch at International

One of the major events for Region 5 at the Sedalia, Missouri International Rally later this month will be the Region 5 luncheon, Friday 29 June, at the Best Western State Fair Inn. Cost of the luncheon will be \$13 per person including tax and gratuity. Sign up will take place during registration at the Region 5 table.

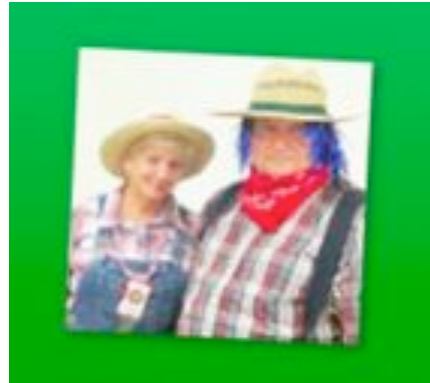
The last day for signing up will be 26 June. The menu for the luncheon will be Orange Glaze Grilled Chicken Breast, Crisp Tossed Green Salad with assorted dressings, Baked Potato with sour cream and butter, green vegetable, blueberry or peach cobbler and drink.



Region 5 Rally, Tipton In. Sept. 12 - 16

Harvest Time in Tipton, Indiana is the theme of the Region 5 Rally this fall. What do you get for your rally fee?

- Four nights of parking
- 30 amp electricity, water and dump station
- Special weekend rate
- Region 5 member first timer discount
- Three breakfasts, one dinner
- Tours
- Seminars
- Flea market
- Buildings are air conditioned
- Hospitality Center
- Games



Consider A Short Caravan

So you want to go on a caravan? Perhaps National Caravans are too long and you can't get that much time away from work. How about caravanning to one of our Unit Rallies or attending the Kentucky Unit Caravan to Door County Wisconsin August 20 - 26, 2012. For complete caravan details please contact Clarence Jones 502-267-6604





WHAT ARE YOU WAITING FOR? COME JOIN US FOR A GREAT TIME.

For details about any of our rallies check out our web site www.kentucky.wbcci.net
Rather talk to a real person? Contact Clarence Jones 502-267-6604

